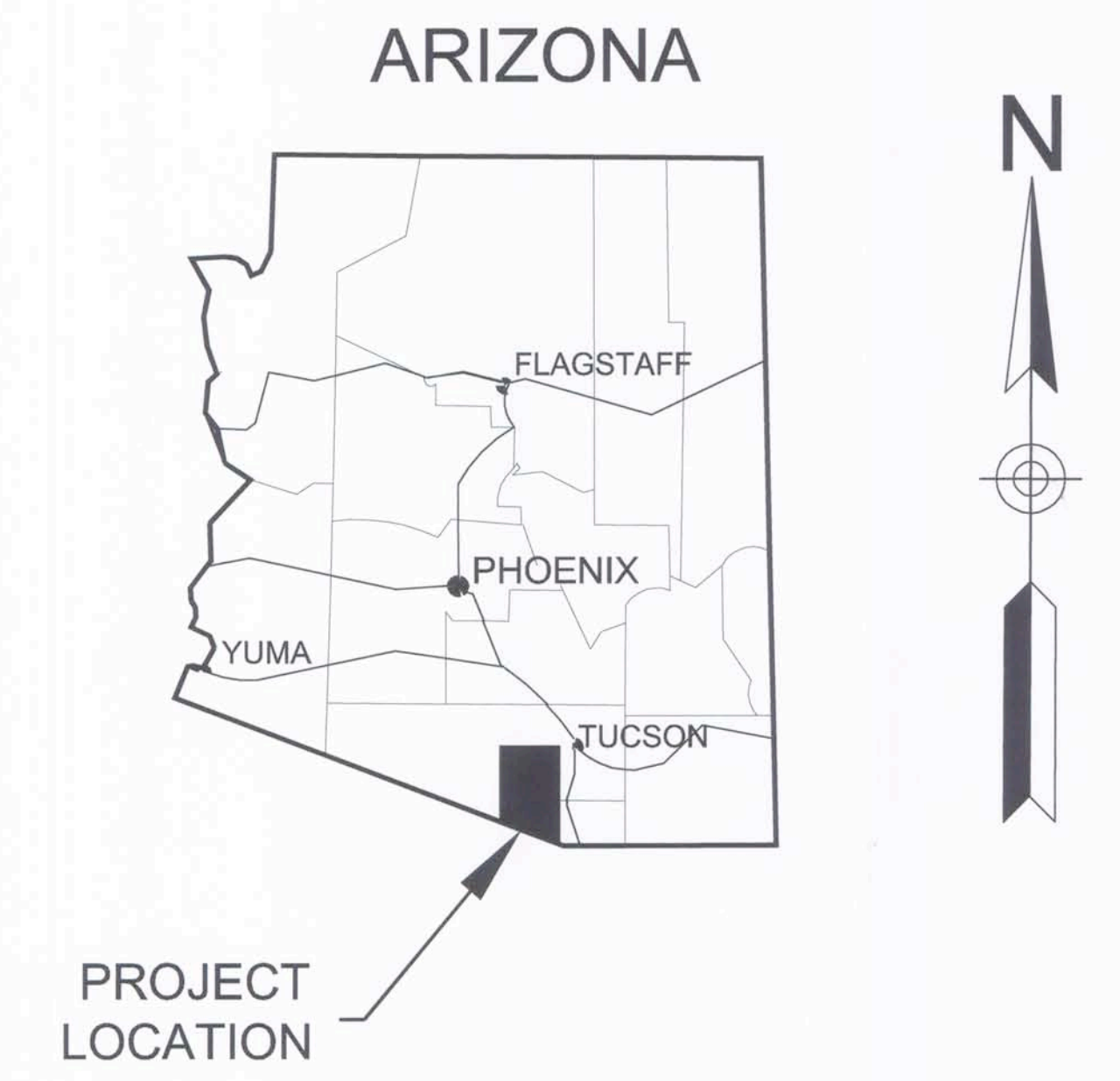
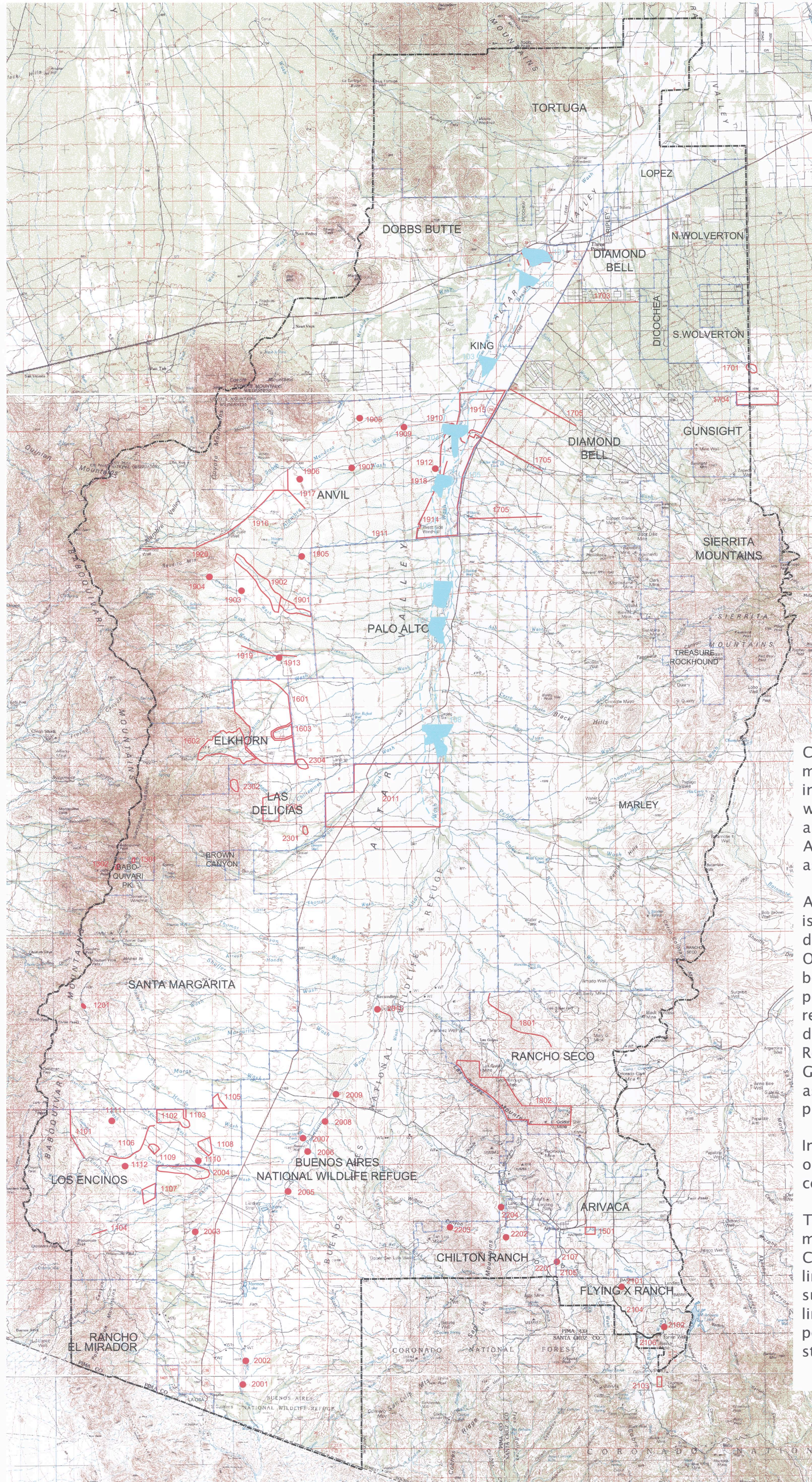


CONSERVATION ACTION SITES IN THE ALTAR VALLEY

Figure 6.4a



Conservation Action Sites are specific management actions and activities that may be implemented to improve range condition and watershed health. Conservation Action Sites are being developed by the Resource Assessment Project Team using the resource assessment data already collected.

As each Conservation Action Site is identified, it is added to the Geographic Information System database for the Resource Assessment Project. Once all of the Conservation Action Sites have been identified, specific information such as potential cost, areas of affect, and permitting requirements will be added to the project database. The Conservation Action Site and Resource data maintained in the project's Geographic Information System database will assist the project team with final analysis and prioritization.

Implementation of specific actions will depend on available funding and permitting considerations.

The Conservation Action Sites presented on this map are preliminary. The proposed Conservation Action Sites are depicted as areas, lines, and points. The areas represent actions such as brush control or burn programs; the lines represent fences and pipelines; and the points represent actions such as erosion control structures, dams, and cattle tanks.

0 1 2 3 4 5 Miles

0 35000'

SCALE 1" = 7000'

The Arizona Department of Water Resources provided funding for this project through Water Protection Fund Grant No. 97-041.WPF. The views and findings represented are the Altar Valley Conservation Alliance's and the Pima Natural Resources Conservation District's and do not necessarily represent those of the Water Protection Fund Commission nor the Arizona Department of Water Resources.

Altar Valley
Conservation
Alliance