

ECOLOGICAL SITES WITHIN ALTAR VALLEY

The ecological site is a basic mapping unit used in rangeland inventory. An ecological site is a distinctive kind of rangeland that differs from other kinds of rangeland in its ability to produce a characteristic natural plant community. The differentiation of sites is based upon physiographic features, soils, climatic factors, and native vegetation.

LEGEND

- Grazing Allotment Boundary
- Study Area Boundary

MAJOR LAND RESOURCE AREAS

- | | | |
|--|--|---|
| <p>Southern Arizona Semidesert Grassland
D41-3</p> <ul style="list-style-type: none"> Volcanic Hills/Basalt Hills Granitic Hills Shallow Uplands Shallow Upland Shallow Upland 80%/Loamy Upland 20% Shallow Upland 75%/Loamy Upland 25% Shallow Upland 70%/Loamy Upland 30% Shallow Upland 60%/Loamy Upland 40% Shallow Upland 60%/Loamy Upland 20%/Limy Slopes 20% Shallow Upland 80%/Limy Slopes 20% Shallow Upland 75%/Limy Slopes 25% Shallow Upland/Limy Slopes Shallow Upland 60%/Limy Slopes 40% Limestone Hills Eroded Channel Loamy Upland Loamy Upland Loamy Hills 60%/Loamy Upland 40% Loamy Upland 50%/Loamy Hills 50% Loamy Upland 80%/Loamy Bottom 20% Loamy Upland 70%/Shallow Upland 30% Limy Slopes Limy Upland Loamy Upland 50%/Deep Sandy Loam 50% Loamy Upland 60%/Deep Sandy Loam 40% Loamy Upland 60%/Clayey Upland (40%) Loamy Upland 70%/Sandy Loam 30% Loamy Upland/Limy Slopes Loamy Upland 80%/Limy Slopes 20% Loamy Upland 60%/Limy Slopes 40% Loamy Upland 50%/Limy Slopes 50% Loamy Upland 50%/Limy Upland 50% Limy Slopes 60%/Loamy Upland 40% Limy Upland 80%/Loamy Upland 20% Loamy Hills 80%/Limy Slopes 20% Loamy Hills 50%/Limy Slopes 50% Limy Slopes Clay Loam Upland 60%/Limy Upland 40% Sandy Loam Upland 40%/Loamy Upland 30%/Limy Slopes 30% Loamy Bottom Loamy Bottom Loamy Bottom 60%/Sandy Bottom 40% Loamy Bottom (Subirrigated) Loamy Bottom (Subirrigated) Sandy Loam Upland Sandy Loam Upland Sandy Loam Upland 80%/Loamy Upland 20% Sandy Loam Upland/Loamy Upland Deep Sandy Loam Deep Sandy Loam Deep Sandy Loam 50%/Sandy Loam 50% Deep Sandy Loam 80%/Sandy Loam 20% Deep Sandy Loam 60%/Sandy Loam Upland 30%/Loamy Upland 10% Deep Sandy Loam/Loamy Upland Deep Sandy Loam 40%/Sandy Loam 40%/Loamy Upland 20% Deep Sandy Loam 50%/Sandy Loam Upland 50% Sandy Loam Upland/Loamy Upland Sandy Loam Upland 50%/Loamy Upland 50% Sandy Loam Upland 70%/Loamy Upland 30% Sandy Loam Upland 60%/Loamy Upland 40% Sandy Loam Upland 60%/Sandy Loam Upland 40% Sandy Bottom Sandy Bottom Deep Sandy Loam 70%/Sandy Bottom 30% Sandy Bottom (Subirrigated) Clayey Upland/Loamy Upland Loamy Upland 50%/Clay Loam Upland 40%/Shallow Upland 10% | <p>Mexican Oak-Pine Woodland and Oak Savannah
D41-1</p> <ul style="list-style-type: none"> Mixed Woodland Shallow Hills | <p>Upper Sonoran Desert Scrub
D40-1</p> <ul style="list-style-type: none"> Shallow Hills Volcanic Hills/Basalt Hills Volcanic Hills 60%/Basalt Hills 20%/Clay Hills 20% Volcanic Hills 80%/Limy Slopes 20% Volcanic Hills Eroded Channel Loamy Upland Loamy Upland Loamy Upland 60%/Sandy Loam Upland 40% Loamy Upland 50%/Limy Fan 50% Shallow Upland 60%/Limy Slopes 40% Loamy Upland 60%/Sandy Bottom 40% Loamy Hills/Limy Fan Loamy Hills 80%/Limy Slopes 20% Loamy Hills 50%/Limy Slopes 50% Limy Slopes 80%/Loamy Hills 20% Limy Upland/Limy Slopes/Limy Fan Limy Fan Limy Fan 80%/Sandy Bottom 20% Limy Upland 60%/Limy Fan 40% Limy Upland 60%/Limy Slopes 40% Deep Limy Upland 60%/Loamy Upland 40% Sandy Loam Upland 40%/Loamy Upland 30%/Limy Slopes 30% Loamy Bottom Sandy Loam Upland Deep Sandy Loam Deep Sandy Loam Deep Sandy Loam 80%/Sandy Loam 20% Deep Sandy Loam 60%/Sandy Loam Upland 30%/Loamy Upland 10% Deep Sandy Loam/Loamy Upland Deep Sandy Loam 40%/Sandy Loam 40%/Loamy Upland 20% Deep Sandy Loam 50%/Sandy Loam Upland 50% Sandy Loam Upland/Loamy Upland Sandy Loam Upland 50%/Loamy Upland 50% Sandy Loam Upland 60%/Loamy Upland 40% Sandy Loam Upland 70%/Loamy Upland 30% Sandy Bottom |
|--|--|---|

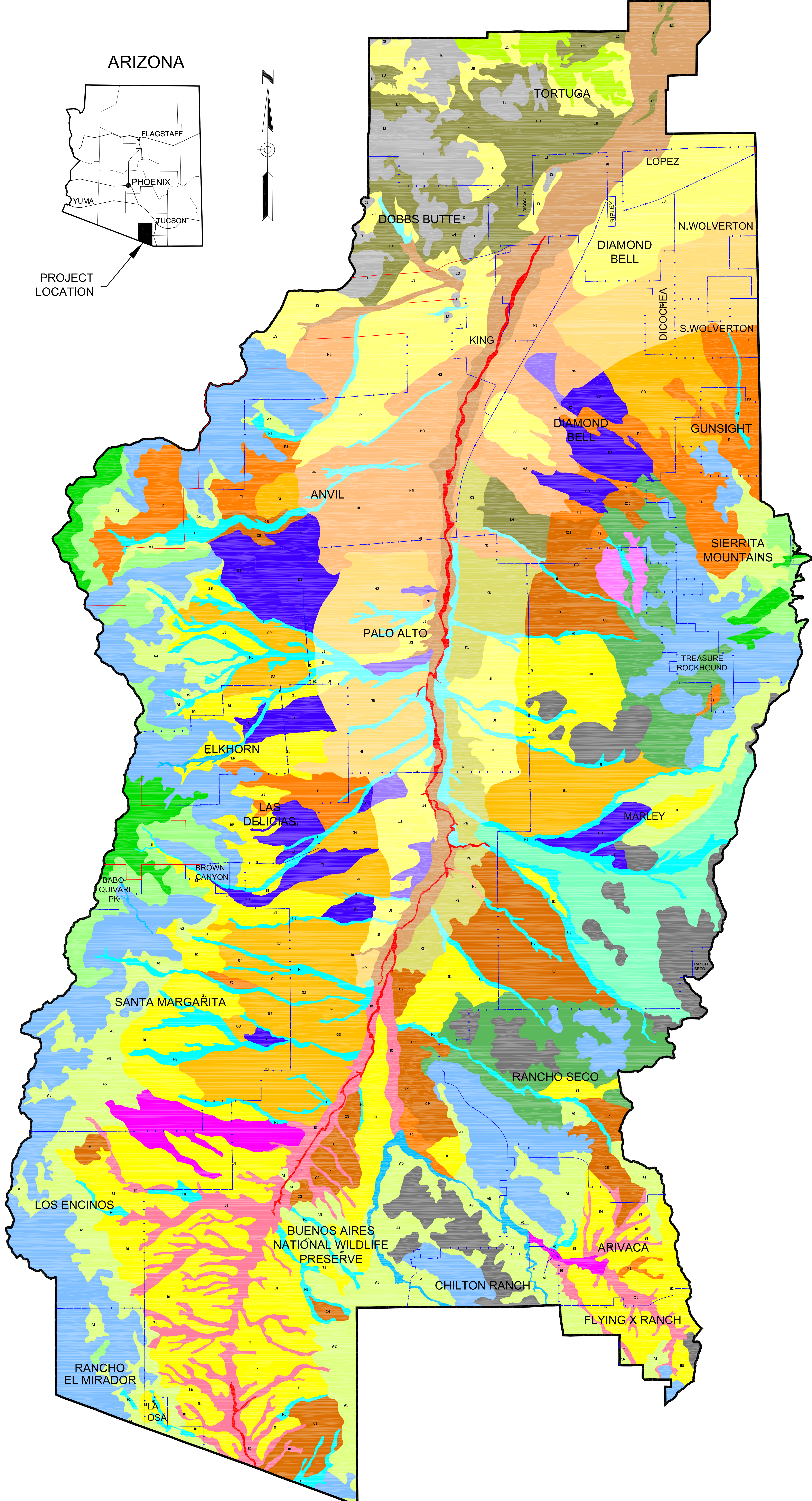
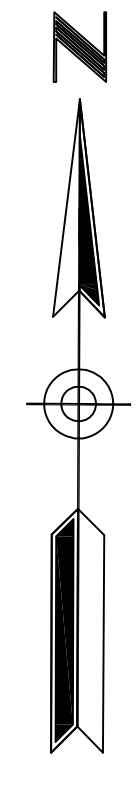
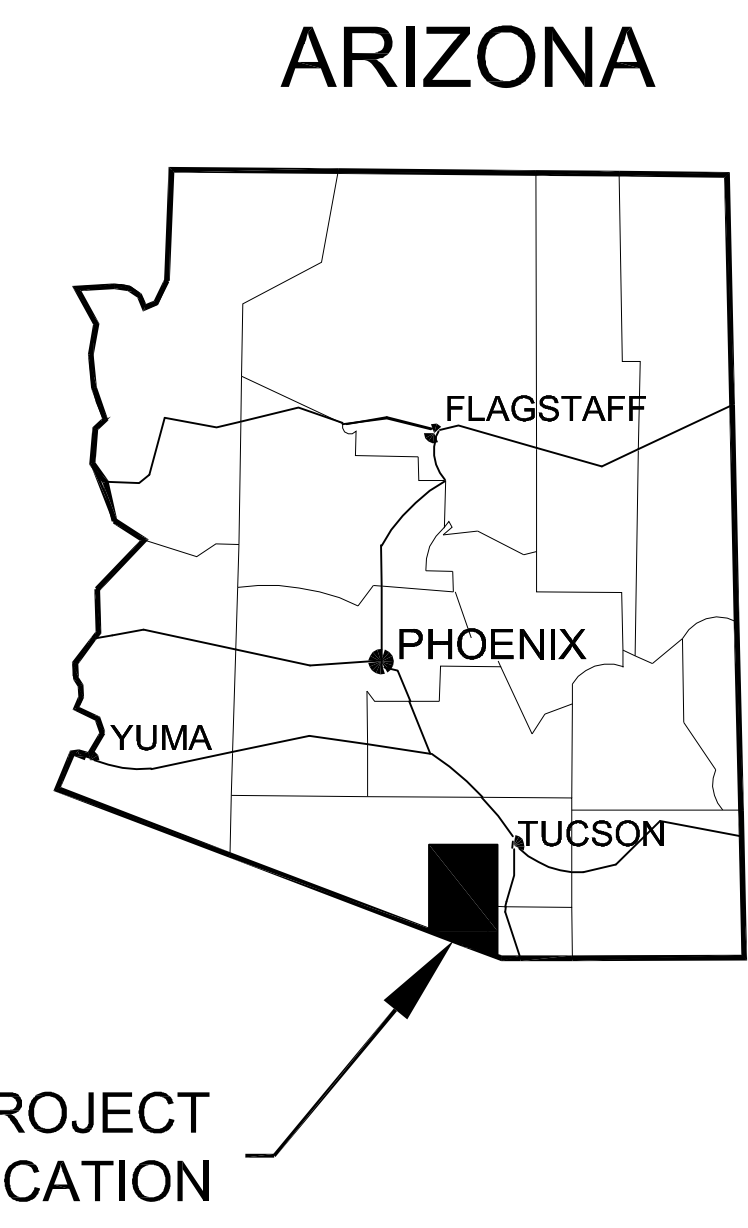
0 1 2 3 4 5 Miles

0 3500'

SCALE 1" = 7000'

The Arizona Department of Water Resources provided funding for this project through Water Protection Fund Grant No. 97-041.WPF. The views and findings represented are the Altar Valley Conservation Alliance's and the Pima Natural Resources Conservation District's and do not necessarily represent those of the Water Protection Fund Commission nor the Arizona Department of Water Resources.

Data source: Pima County Department of Transportation and Flood Control, Technical Services Division, Pima County Land Information System, Version 9.0.



Altar Valley Conservation Alliance