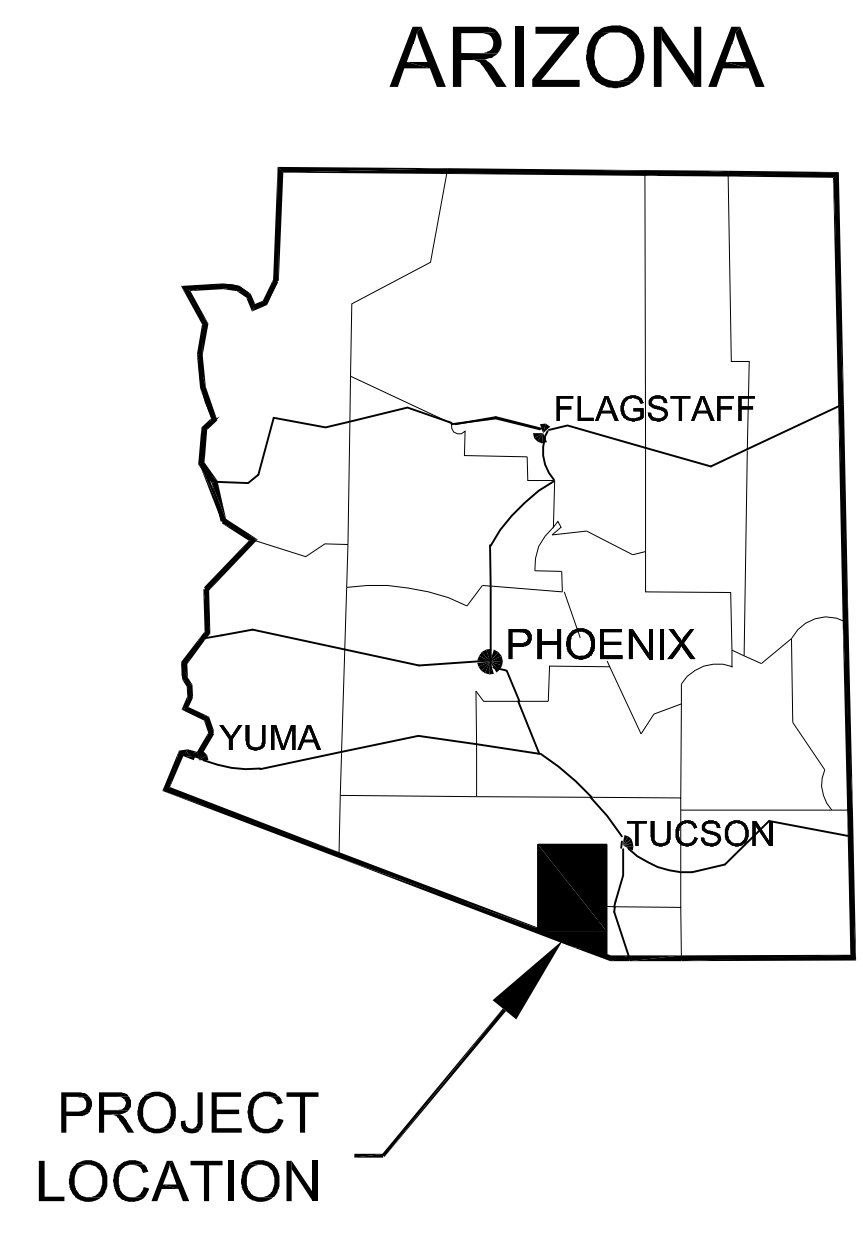
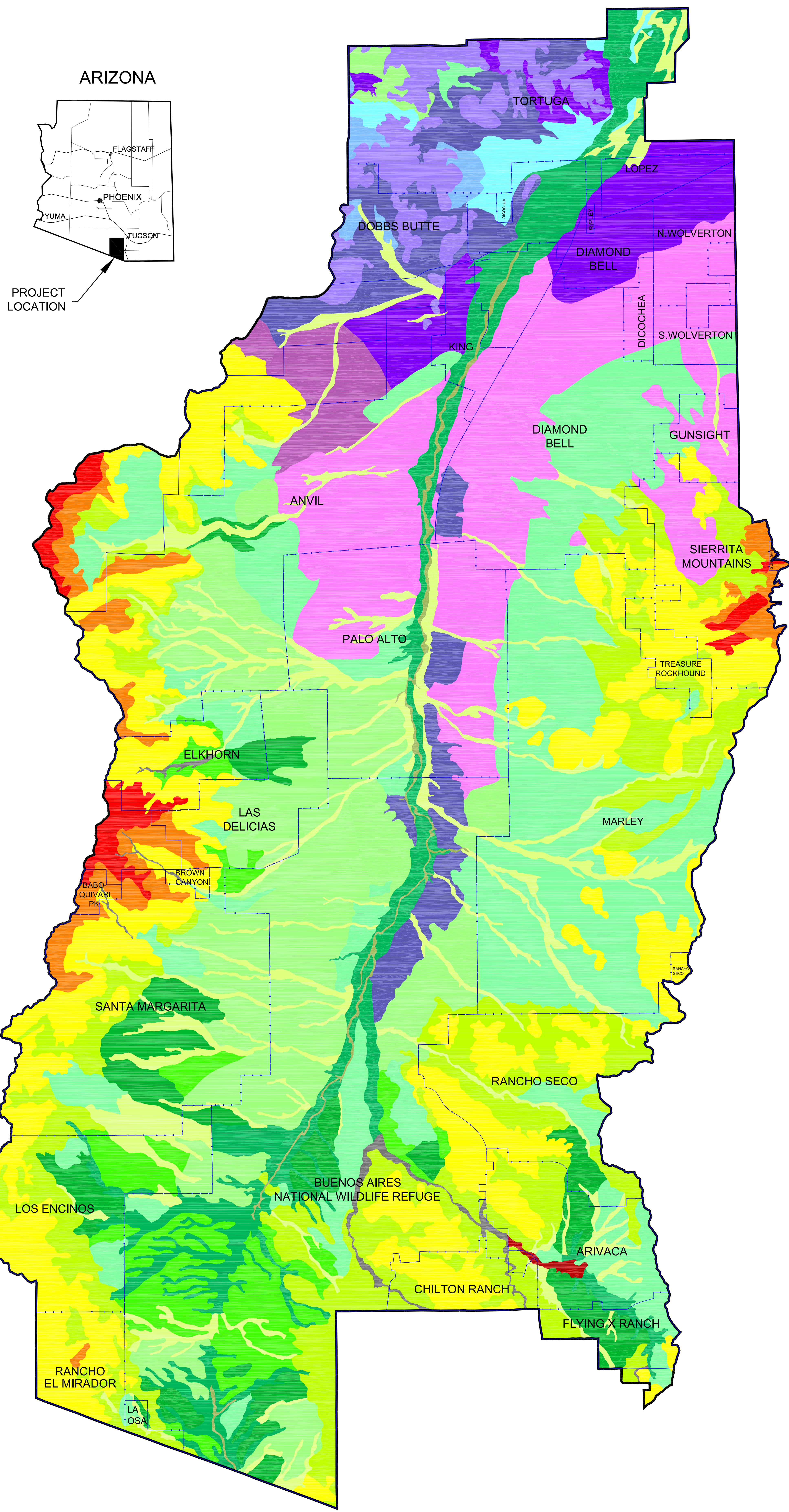


# VEGETATION WITHIN ALTAR VALLEY

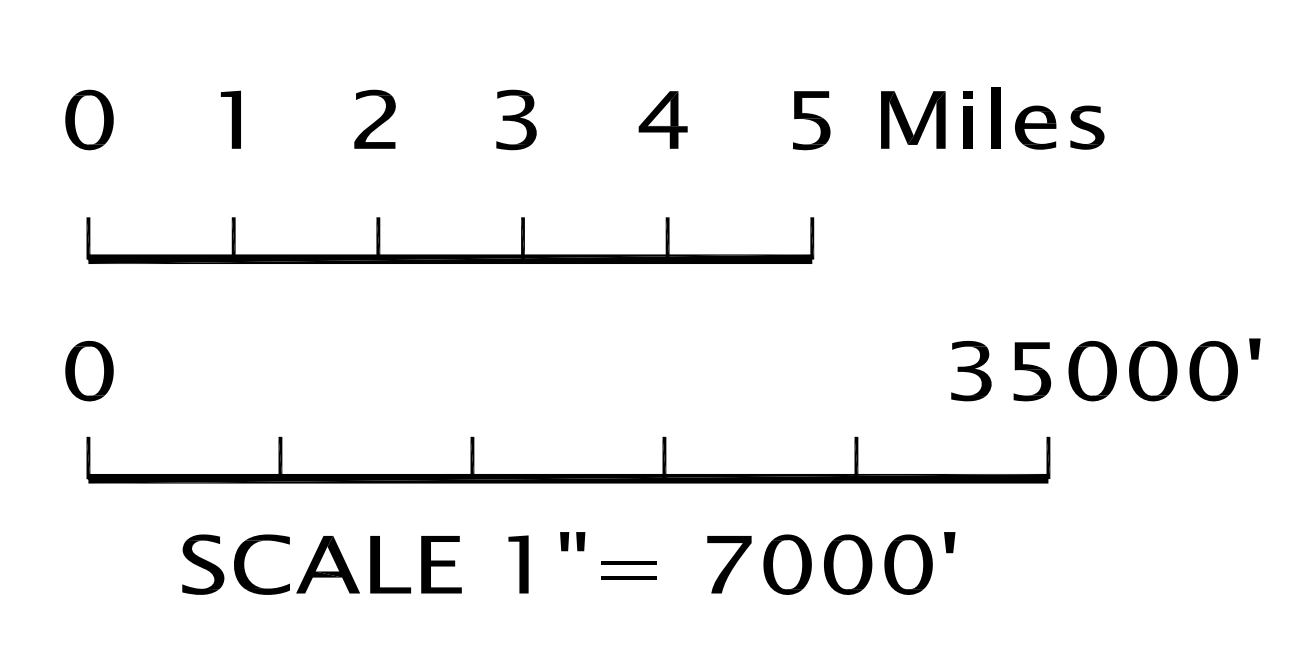
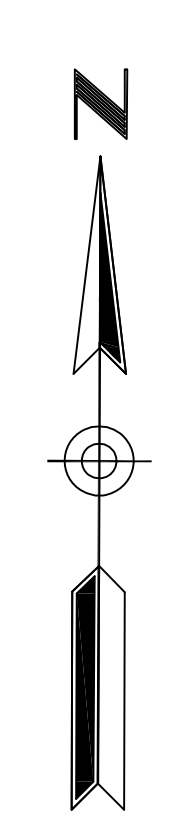


## LEGEND

- Study Area Boundary
- Grazing Allotment Boundary

### VEGETATION TYPES

- FOREST AND WOODLANDS**  
 Warm Temperate Forests and Woodlands  
 Madraen Evergreen Woodland (123.3)
- 1 - Mexican oak, juniper and pinyon woodland
  - 2 - Mexican oak - savannah - midgrasses
- GRASSLANDS**  
 Tropical and Subtropical Grasslands  
 Semidesert Grasslands
- 3 - Native midgrasses - mixed shrub
  - 4 - Native shortgrasses - mixed shrub
  - 5 - Non-native lovegrasses - less than 5% mesquite canopy
  - 6 - Non-native lovegrasses - greater than 5% mesquite canopy
  - 7 - Native grasses - less than 5% mesquite canopy
  - 8 - Native grasses - halfshrubs - greater than 5% mesquite canopy
  - 9 - Mixed native, non-native grasses and herbs - less than 10% mesquite canopy
  - 10 - Mixed burrobrush, mesquite, grasses and herbs (eroded channel)
  - 11 - Mixed native, non-native grasses and herbs - greater than 10% mesquite canopy
- Sonoran Savannah Grasslands**
- 14 - Native grass, mixed shrub and cacti, mesquite, paloverde, saguaro
  - 15 - Native grass, mixed shrub and cacti, mesquite, ironwood, saguaro, paloverde,
- WETLANDS**  
 Tropical and Subtropical Wetlands  
 Sonoran Riparian and Deciduous Woodlands
- 13 - Cottonwood, willow, ash, walnut, sycamore, hackberry, mesquite
- Sonoran Cienega**
- 12 - Sacaton, sedge, rush, cattail, cottonwood, willow
- DESERTLANDS**  
 Tropical and Subtropical Desertlands  
 Sonoran Riparian and Deciduous Woodlands  
 Arizona Upland Subdivision
- 16 - Creosotebush, halfshrubs, annual grasses and forbs
  - 17 - Saguaro, paloverde, triangle bursage, mixed cacti
  - 18 - Saguaro, jojoba, paloverde, ironwood, mixed shrub and cacti
  - 19 - Whitethorn, mesquite, creosotebush, halfshrubs and grasses
  - 20 - Mesquite, snakeweed, burroweed, annual grasses and forbs, mixed cacti



Altar Valley  
 Conservation Alliance

The Arizona Department of Water Resources provided funding for this project through Water Protection Fund Grant No. 97-041.WPF. The views and findings represented are the Altar Valley Conservation Alliance's and the Pima Natural Resources Conservation District's and do not necessarily represent those of the Water Protection Fund Commission nor the Arizona Department of Water Resources.

Data source: Pima County Department of Transportation and Flood Control, Technical Services Division, Pima County Land Information System, Version 9.0.